



# PC-MFloor® 300

## Interior Floor Coating

PC-MFloor® 300 is a high strength interior floor coating specifically used over existing non-porous floor coverings which replicates the appearance of exposed concrete.

### FEATURES AND BENEFITS

- Used over non-porous floors-ceramic tiles, epoxy coatings
- High bonding strength
- For interior floors
- Two component product: cementitious powders liquid resin
- Available in 7 standard colours
- Finish system with epoxy clear coating to protect the designer floor

(suitable for areas not subject to UV)

### AREAS OF USE

- Coffee shops
- Restaurants
- Hotels & Resorts
- Private homes and apartments

### APPLICATION



Clean the surface and allow it to dry.



Apply **PC-Conrend®** **Screed** epoxy repair compound to level the surface.



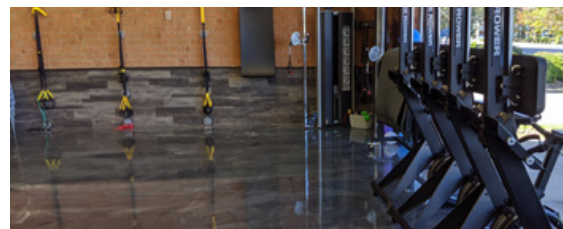
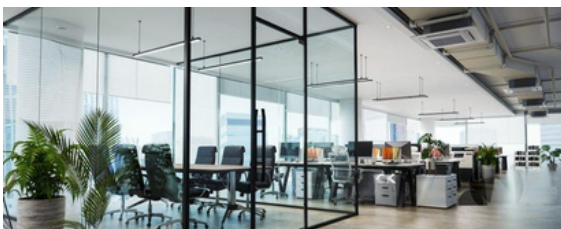
After mixing the 2 components as per mixing instructions, apply **PC-MFloor® 300** using a stainless steel trowel or notched trowel.



Scatter water drops onto the wet **PC-MFloor® 300** and creates a desired pattern using a stainless steel trowel.



Allow to dry for 2 to 3 days. Ensure moisture content is below 5%, apply epoxy or polyurethane clear top coat.



Please note: As the MFloor product range is formulated using a combination of natural raw materials, color variances may occur. Should you wish to minimize these color differences, it is recommended the applicator use products from the same batch.

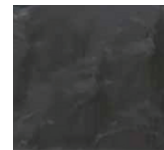
### PRODUCTS PROPERTIES

Physical Properties	Typical Value
Coverage	4.5kg/m <sup>2</sup> (3mm thick)
Drying time	48 - 72 hours
Tools	Stainless steel trowel, notched trowel
Mix	20kg powder + 4kg liquid
Water	17.5kg powder + 5.5kg liquid
Package	24kg plastic pail
Shelf life	6 months in original unopened packaging

### COLOURS



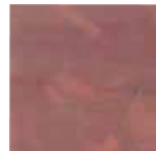
FG100 STANDARD



FG200 DARK GREY



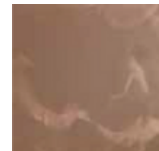
FG300 YELLOW



FG400 RED



FG500 GREEN



FG600 BROWN



FG700 WHITE



**PC-WC GLOBAL FZ-LLC**

Compass Building, Al Shohada Road Al-Hamra Industrial Zone-FZ,  
Ras Al-Khaimah, UAE  
Email : info@pc-wc.com  
Phone +971542455817 , www.pc-wc.com



TECHNICAL DATA SHEET UPDATED IN  
SEPTEMBER 2020  
TDS/PC-MFLOOR® 300/20

All technical data in this Product Data Sheet are based on laboratory tests. Actual measured data may vary due to circumstances beyond our control.

The information, particularly the recommendations relating to the application and end-use of PC-WC products, are given in good faith based on PC-WC's current knowledge and experience of the products when properly stored, handled and applied under normal conditions by PC-WC recommendations. In practice, the differences in materials, substrates and actual site conditions are such that no warranty in respect of merchantability or of fitness for a particular purpose, nor any liability arising out of any legal relationship whatsoever, can be inferred either from this information, or from any written recommendations, or any other advice offered. The user must test the product's suitability for the intended application and purpose. PC-WC Global FZ-LLC reserves the right to change the properties of its products. The proprietary rights of third parties must be observed. All orders are accepted subject to our current terms of sale and delivery. Our technical assistance is at the disposal of the users. Consult the latest update of the technical data sheet on our website [www.pc-wc.com](http://www.pc-wc.com)