



PC-Deccotone® Fine

PC-Deccotone® Fine, is a marble coating synonymous with luxury and sophistication, boasts a rich historical legacy tracing back to ancient Roman culture. This composite material blends carefully selected marble particles within a modern transparent resin, replicating the look of natural 'Dressed Granite.' Despite its affordability compared to authentic marble, this robust and visually appealing finish is tailored for outdoor use, meeting the highest architectural standards.

FEATURES & BENEFITS

- Demonstrates exceptional resistance to impact and abrasion.
- Exhibits remarkable flexibility characteristics.
- Shows outstanding resistance to weather elements and UV exposure.
- Offers fast drying capabilities across a range of temperature conditions.
- Facilitates breathability to enable substrate ventilation (ASTM E96).
- Environmentally friendly and formulated with water-based components.

USES & APPLICATION

- Initially intended for outdoor applications but commonly utilized indoors for columns and accent walls.
- Suitable for a wide array of surfaces such as concrete, cement rendering, lightweight concrete, cement fiber boards, Sprayplaster, gypsum dry walls, and chipboard.
- Successfully mimics the appearance of genuine 'Dressed Granite'.
- Widely employed in diverse architectural environments like private villas, hotels, resorts, commercial complexes, retail centers, high-rise buildings, and other similar settings.
- Particularly well-suited for PC-WC EIFS applications.

TECHNICAL INFORMATION

Architectural Specification:

Prepare the substrate by removing any loose or crumbly material, filling in gaps as necessary. Ensure the surface is clean, dry and in optimal condition.

New Work:

Apply a single coat of **PC-Prime® PGM** using a roller and allow it to cure. Subsequently, apply one coat of **PC-Deccotone® Fine Undercoat** with a roller and permit it to cure. Lastly, utilize a trowel to apply **PC-Deccotone® Fine** to attain the desired color and texture, mirroring the specifications from the approved architectural sample.

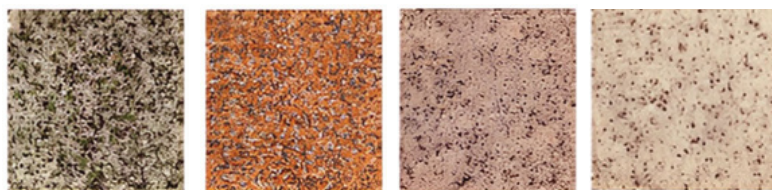
Redecoration:

Protect all adjacent areas that should not be painted. Address any cracks, chips, voids, or damages with an appropriate filler. Begin by removing loose paint, grease, dirt and grime. Apply primer to any exposed surfaces as necessary before proceeding with the painting process.

PRODUCTS PROPERTIES

Physical Properties	Typical Value
PC-Prime® PGM	0.15-0.2 kg/m ²
PC-Deccotone® Fine undercoat	0.2-0.3 kg/m ²
PC-Deccotone® Fine	2.5-3.5 kg/m ²

Colour: Available in a bespoke range of colours.



PC-WC GLOBAL FZ-LLC

Compass Building, Al Shohada Road Al-Hamra Industrial Zone-FZ,
Ras Al-Khaimah, UAE
Email : info@pc-wc.com
Phone +971542455817 , www.pc-wc.com

TECHNICAL DATA SHEET UPDATED IN
SEPTEMBER 2020
TDS/PC-DECCOTONE® FINE/20

All technical data in this Product Data Sheet are based on laboratory tests. Actual measured data may vary due to circumstances beyond our control.

The information, particularly the recommendations relating to the application and end-use of PC-WC products, are given in good faith based on PC-WC's current knowledge and experience of the products when properly stored, handled and applied under normal conditions by PC-WC recommendations. In practice, the differences in materials, substrates and actual site conditions are such that no warranty in respect of merchantability or of fitness for a particular purpose, nor any liability arising out of any legal relationship whatsoever, can be inferred either from this information, or from any written recommendations, or any other advice offered. The user must test the product's suitability for the intended application and purpose. PC-WC Global FZ-LLC reserves the right to change the properties of its products. The proprietary rights of third parties must be observed. All orders are accepted subject to our current terms of sale and delivery. Our technical assistance is at the disposal of the users. Consult the latest update of the technical data sheet on our website www.pc-wc.com